



Meeting **Chew Valley Area Forum**

Date **Thursday, 20th November, 2014**

Time **6.30 - 9.00 pm**

Venue **The Wellsway - Harptree Hill, West Harptree, BS40 6EJ**

	Subject		
1.	WELCOME AND INTRODUCTION Chairman of Forum, Cllr Richard Curry, Compton Martin Parish Council		6.30pm
2.	ASK THE FORUM (Pages 3 - 4) Open public session		6.35pm
3.	TEA BREAK		7.20pm
4.	Apologies and minutes of the last meeting		7.30pm
5.	Matters arising		
6.	PLACEMAKING (Pages 13 - 50) Richard Daone, Bath & North East Somerset Council, Planning Policy		7.40pm
7.	AREA PROFILE, FORUM PRIORITIES AND ACTION PLAN (Pages 51 - 56) Sara Dixon, Bath & North East Somerset Council Planning Policy		8.10pm
8.	RURAL BROADBAND - BRIEFING NOTE (Pages 57 - 58) For information		8.40pm
9.	10 IN 100 - VERBAL UPDATE		
10.	ANY OTHER BUSINESS		
11.	FUTURE AGENDA ITEMS CCG Community Services Review		
12.	DATES OF FUTURE MEETINGS Thursday 12 th February 2015, 6.30pm, The Wellsway, West Harptree		
13.	CLOSE		9.00pm

This page is intentionally left blank

Connecting Communities Forums

ASK THE FORUM sessions

Purpose

The Forum has been set up by Bath & North East Somerset Council and its partners as part of the Connecting Communities initiative, which aims to develop a more joined-up approach to tackling concerns raised by local people and improve efficiency by reducing the number of community engagement meetings about different issues. These meetings are designed to look at ways in which organisations can work together to address local issues.

All Forum meetings are open to the public. In order to encourage members of the public to raise concerns in their area, an 'Ask the Forum' open session will be held prior to the main meeting to allow issues by the public to be raised.

Members of the Forum

Bath & North East Somerset Ward Councillors; representatives from local Town and Parish Councils, Chamber of Commerce and a range of community and voluntary organisations.

Forum areas

Chew Valley: Cameley, Chew Magna, Chew Stoke, Clutton, Compton Martin, East Harptree, Hinton Blewett, Nempnett Thrubwell, Norton Malreward, Publow and Pensford, Stanton Drew, Stowey Sutton, Ubley, West Harptree.

Somer Valley: Farrington Gurney, High Littleton, Midsomer Norton, Paulton, Peasedown St John, Radstock, Timsbury, Westfield.

Keynsham Area: Chelwood, Compton Dando, Corston, Farmborough, Keynsham, Saltford, Whitchurch, Marksbury.

Management of each meeting

- a. Meetings will be chaired by the Chair or Vice Chair of each Forum.
- b. Questions can be submitted in advance of the meeting and must be sent to Mark_Hayward@bathnes.gov.uk or tel: 01225 396975.
- c. Officers from any of the Public Services present may provide a brief statement on relevant work in the Forum area.
- d. Personal or individual household issues will be avoided, unless they have a wider impact.
- e. Issues that have not been reported through the relevant channels, such as Council Connect, will not be discussed. However, if unresolved, the Chair and or Vice Chair may allow for the issue to be discussed.
- f. The Chair and or Vice Chair will have the final say on the suitability of questions discussed at the meeting.
- g. Action Notes of the meetings will be taken.
- h. Issues that require wider debate will be reported to the main Forum meeting.
- i. Questions that reflect the priorities of the Forum should be encouraged. The Chair will highlight the priorities at the beginning of each meeting.
- j. The meeting will last no more than one hour.

This page is intentionally left blank



**Note of the meeting of the Chew Valley Area Forum
held on Thursday, 9th October, 2014**

The Wellsway - Harptree Hill, West Harptree, BS40 6EJ

1. Welcome and Introduction

1.1 The Chair welcomed members and guests to the meeting and explained the order of business for the meeting.

1.2 The Chair provided the following statement to the group

The Forums are a new way of working. The aim is to improve collaboration and engagement. We need to ensure consultations and engagement are fed through the Forums and also set out our priorities. We do need to be realistic about what we can achieve but we need to focus on common issues across the Forum area rather than specific parish issues. We need to come together equally. Everyone has an important part to play; Members need to ensure they report back to their organisations, it's your responsibility to do so. We need you to bring issues back to the Forum, these needs to be a two way communication.

There may be issues that we need to resolve ourselves rather than looking to the authorities to do this for us. We need to be positive and look for solutions rather than focussing on the problems. We need to work together to achieve the same goals.

The Forums will take some time to bed in and there maybe things we need to change or improve upon but we need everyone's help to make this work. We have a voice for the Chew Valley and it is important that we use this Forum constructively.

We have a number of presentations tonight and there is a lot to get through this evening. This is an open meeting and members of the public are welcome to attend to observe. Later in the meeting there will be a group discussion and members of public can participate in this discussion if they wish. Members of the Forum are encouraged to ask question but please be respectful to the presenters and wait for an appropriate time to raise your questions.

Thank you for voting me as your Chairman. Our Vice Chairman, Tony Heaford is away at present and sends his apologies. I am very excited that the Forum is now set up and creates a positive avenue for discussions about issues affecting the Chew Valley. I would like to thank everyone for your attendance, particularly to the Police and the Fire Service for coming along and joining the Forum. We hope that you feel this will be a positive group where you can bring issues, consultations and seek feedback from the group. Thank you also to our guest speaker, Richard Daone from Planning policy who will be presenting later on the Core Strategy.

1.3 Those present introduced themselves.

Richard Curry (Compton Martin Parish Council and the Forum Chair), Sara Dixon (B&NES Council), Mark Hayward (B&NES Council), Julie Bragg (Publow with Pensford Parish Council), John Harvey (Stanton Drew Parish Council Clerk), Peter Duppa-Miller (Observer representing B&NES Local Councils Association), Kate Atkinson (Camerley Parish Council), Rosemary Naish (Clutton Parish Council), Helen Richardson (Clutton Parish Council), Wesley Hallam (Ubley Parish Council), Chris Head (WERN), Tony Crouch (Observer representing Keynsham Forum), Mark Thompson (Chew Valley Chamber of Commerce) Rodry Andrew (Chew Magna Parish Council), Richard Ireland (West Harptree Parish Council), PC Gemma Hill (Police), Stuart Peard (Police), Richard Doane (B&NES Council Planning Policy).

2. Apologies

2.1 Apologies were received from Louise Fradd (Sponser), Derek Quilter (Sponser), Tony Heaford (Vice Chair), Councillor Paul Crossley, Councillor Tim Warren , Rod Podger (Chew Valley Chamber of Commerce) and Chew Stoke (Parish Council)

3. Minutes of the first inaugural meeting

3.1 The notes from the last meeting that took place on 24th July 2014 were agreed as an accurate record.

4. Matters arising

4.1 Outstanding issue 4.4 of the Ask the Leader, Councillor Tony Hooper, raised the issue regarding whether outline planning permission that have not been signed off can go back to be re-appraised now that the Core Strategy is implemented. It was suggested that this would be carried over to the next meeting, there was however feedback that stated that the issue had now been overtaken by events and therefore could be closed off.

5. Working arrangements and membership

5.1 Sara Dixon provided a verbal update to the group on working groups, membership and promotion of meetings.

5.2 The forum will meet a minimum of four times a year with an annual general meeting will be incorporated into these arrangements. The terms of reference (TOR) have been circulated to the forum members. Should the Forum have the need to set up working groups the TOR allow for this to happen.

5.3 The forum covers the geographical area of 14 villages and 4 wards and we are bringing the parishes together along with voluntary sector, the chamber of commerce and the public sector services.

5.4 Bath and North East Somerset Council (B&NES) have dedicated sponsors to help us resolve outstanding issues and help with move us through the process, for this forum these are Louise Fradd (Strategic Director for Place) and Derek Quilter (Divisional Director for Major Projects).

5.5 The arrangements for the meetings will be published on the B&NES Council meeting calendar. The agenda and minutes papers will also be available from the same websites page. <http://democracy.bathnes.gov.uk/ieListMeetings.aspx?CIId=527&Year=0>

5.6 The public sector partners that will take part in this Forum are the two Police representative Gemma Hill and Stuart Peard, Jason Edwards from Avon Fire and Rescue, Curo Housing (we are awaiting a representative to be put forward) and Public Health (further information about involvement is noted later in the meeting)

6. Parish and Community issues

6.1 A verbal update on how local issues could be raised was provided by Sara Dixon.

6.2 In the past parish councils have been able to raise issues through the Parish Cluster meetings; these have now been disbanded now that this Forum has been set up. We do need to still allow for some provision where local issues to be raised. What we should be looking to deal with will need to be those issues that have a common purpose across the forum area and not those specific to individual parishes.

6.3 Local village issues need to be dealt with directly by contacting the relevant organisation whether that is with the council or another public sector partner. Where there are issues that will affect the whole forum area or a group of villages we need you to raise this at the forum area. This is open to all members not just for parish councils.

How this will work:-

- Prior to each meeting a request will be made for questions or concerns to be submitted for discussion.
- The Chair and Vice Chair will discuss at the pre-planning meeting with the Sponsor whether this is an item for discussion at the Forum or whether it needs to be passed to the relevant officers for action.
- An issues log will record all of the questions and concerns raised and will be circulated with the paperwork.

6.4 In addition Parish Cluster meetings from over the past two years have been reviewed and there are no outstanding issues. What is obvious is there have been a number of issues raised

around service delivery such as drainage clearing; hedgerows clearance etc. As this is a service standard and it would be helpful to everyone if this information can be shared. Therefore we would like to start building noting the Question and Answers that cover the Council, public sector partners and members of the Forum which can be easily be shared, this is something we can be built upon over time. Some of the information may be relevant to the other forum areas or just area specific. If it is felt it would be useful we can include information such as the local summer fetes and key events to help with promotion, this will help with avoidance of diary clashes.

6.5 The forum attendees had no further questions on this item.

7. Consultation Items

7.1 The Chair introduced Richard Doane, B&NES Council Planning Policy Team Leader who presented an update on the Core Strategy and what the update means for the area.

7.2 The Core Strategy as it stands is available online and there will be an update final version available in two weeks' time (23rd October 2014) along with a hard copy version.

<http://www.bathnes.gov.uk/services/planning-and-building-control/planning-policy/core-strategy-examination>

7.3 The attached presentation that accompanies these minutes covers the full presentation that was provided at the meeting.

7.4 Question and Answers from this meeting:

Question 1: On what date does the plan start and how long does it run for?

Answer 1: The plan started on 1st April 2011 and runs for 18 years until 2029.

Question 2: What happens when multiple applications are received that are not linked (for example - different land owners) which result in a total of more than 50 homes being provided to an individual RA1 village?

Answer 2: There is a risk that more homes than have to be built could be passed. It is more likely that the Council would be able to use the controls in the Core Strategy to decline applications if requirements have already been met.

Question 3: What is definition meant by the wording 'affordable housing'?

Answer 3: (i) Homes that are built for the purpose of social housing rental dwellings. (ii) Homes that provide an opportunity for shared ownership. (iii) Dwellings that are made available at 80% of the normal market value.

Question 4: Where a development is put forward that straddles village boundaries is there the ability for the boundaries to be adjusted for the provision to be met?

Answer 4: Limited affordable housing can be built on green belt land where a there is a shortage, as set out in the Core Strategy. Rural exceptions policy also allows for smaller market developments. Where objections are made regarding green belt usage, the national policy now states that schemes can go ahead where there is a need for affordable housing.

Question 5: Does HDB give the same level of protection as given to the Green Belt?

Answer 5: There is less protection given to HDB sites, the form of development is where the protection is used.

Question 6: Where applications require an inclusion of 15% affordable housing how is the actual number homes determined calculates to a partial figure?

Answer 6: There is case law that determines that partial figures will need to move up the next full number. There are cases where the Council refuse plans by stating that the plans are inefficient use of land when numbers are manipulated.

Question 7: What is the date that CIL becomes applicable to submitted applications?

Answer 7: CIL is to be adopted by April 2015 and runs from the date it is adopted, B&NES Council are submitting their request to adopt on 10 October 2014 for the inspectorate to carry out its examination before Christmas 2014. It is important for the adoption of CIL to be in place before April 2015 as if it is not there will be the potential loss of income for both B&NES and the Parish Councils. There will be two levels of income from CIL, 15% is the standard amount and 25% to areas that have a Neighbourhood Plan in place.

The date that an application is determined is what counts to whether CIL is applicable.

7.5 It was discussed that where section 106 schemes are planned there is a risk of these being struck through and communities will then miss out. It is in our interest monitor what the schemes are and to encourage our Ward Councillors to support getting CIL adopted.

8. What are our priorities?

8.1 Sara Dixon provided a short presentation that asked the forum to consider what the challenges are for the area and what the gaps are in our data that requires further work.

8.2 The meeting split into three groups to discuss and report back on the priorities for the Chew Valley.

8.3 Sara Dixon agreed to take away the feedback and build a profile based on this information and then bring it back to this forum.

8.4 It was agreed by the group that the two priorities that have the greatest urgency are access to services and transportation.

9. Standing Items

9.1 PC Gemma Hill and PC Stuart Peard. Both Police Officers cover parts of the Chew Valley provided an update on policing in the area. It was put to the group that they are able to put forward ideas on what they would like to hear from the officers at future meetings.

9.2 It was suggested that future agendas would give the Police an earlier slot to allow for the need to leave the meeting due to operational requirements.

9.2 The update from PC Stuart Peard covered the following points:

- The Police Station in Bath has been sold to The University of Bath for re-development. It is presently still in use and open until 8pm. The plan to use the One Stop Shop opposite is not going to happen as the space available is not great enough for the needs.

- Radstock Police Station remains open Monday – Wednesday and Friday – Saturday 10am – 2pm.
- The Ashmead custody suite is now open and houses 48 cells centre in Keynsham is now operational as are the centres at Patchway and Bridgewater.
- The initial Community Speed watch that was setup continues to be built upon. .
- Farmwatch is now operational across 250 farms in Bath and North East Somerset.
- Crime Prevention - there has been a number of shed breaks that have increased due to the time of year. General care and awareness is needed and needs to be reiterated.
- If Parishes wish to share information within newsletters it is helps get the message out there.

9.2 The update from PC Gemma Hill covered the following points:

- The beat officers will be located at the new civic centre in Keynsham.
- The Keynsham Police Station remains open.
- A vehicle stop check resulted in £20,000 worth of cannabis being found.
- Six out of eight dwelling burglaries have seen suspects identified and the other two are ongoing investigations.
- A beat warrant resulted in a chemist factory being identified.
- Beat officers have been concentrating on being highly visible.
- Bishop Sutton has been highlighted as a hot spot for anti-social behaviour and work is continuing to deal with these issues; this is seen to be due to a lack of facilities for young people.

9.3 Responses to questions put to the Police.

- 1) It was confirmed that the PSCO will continue to carry out duties.
- 2) With tax discs now longer needing to be visible on vehicles it makes it more difficult to identify if cars have been abandoned. The DVLA online provides the ability for anybody to check a vehicle for valid Tax or MOT. <https://www.gov.uk/get-vehicle-information-from-dvla>
- 3) PACT meetings are continuing in some areas. Other areas have discontinued. There are other methods of communicating where PACT is not happening.

9.4 Health related issues – Sara Dixon provided an update on Your Health, Your Voice.

Health related issues - Your health, Your Voice

The Clinical Commission Group (CCG) has recently set up a public and patient participation group called Your Health, Your Voice. It's made up of local people with an interest in healthcare who provide feedback on the latest proposals and consultations. They currently meet every two months on a Thursday evening.

They are keen to make the group as representative of the local population as possible and need people to help with disseminating information about future CCG's consultation to a wider audience and also feedback to the CCG on local people's views regarding the local health service.

There is limited space on these groups and it has been agreed with the Public and patient participation group lead that the Chair's from each Forum will initially attend these meetings on behalf of the area. The Vice Chair's will be a substitute.

So that we make sure the communication is two- ways we will ensure there is a standing agenda item for members to raise issues regarding health provision to feedback to the CCG.

9.5 No Fire Service report was provided for this meeting. Jason Edwards from Avon Fire and Rescue has been asked to provide us with an update from the Fire Service at future meetings.

10. Any Other Business

10.1 Mark Hayward explained that this group are invited to take part in the Council Budget Fair meetings that are planned for the first week in November. Further information is with the minutes of this meeting.

11. Dates of Future Meetings

11.1 The next two meetings of The Chew Valley Forum will take place at The Wellsway, Harptree Hill, West Harptree, BS40 6EJ on:

- *Thursday 20th November 2014*
- *Thursday 12th February 2015*

This page is intentionally left blank

Chew Valley Area Forum

Thursday 9th October 2014

Making Bath & North East Somerset an **even** better place to live, work & visit

Agenda item 1. Welcome and introductions

Agenda item 2. Apologies

Agenda item 3. Minutes of the first inaugural meeting

Agenda item 4. Matters arising

Agenda item 5. Working arrangements and membership

Agenda item 6. Parish and Community issues

Making Bath & North East Somerset an even better place to live, work & visit

Agenda item 7. Consultation Items

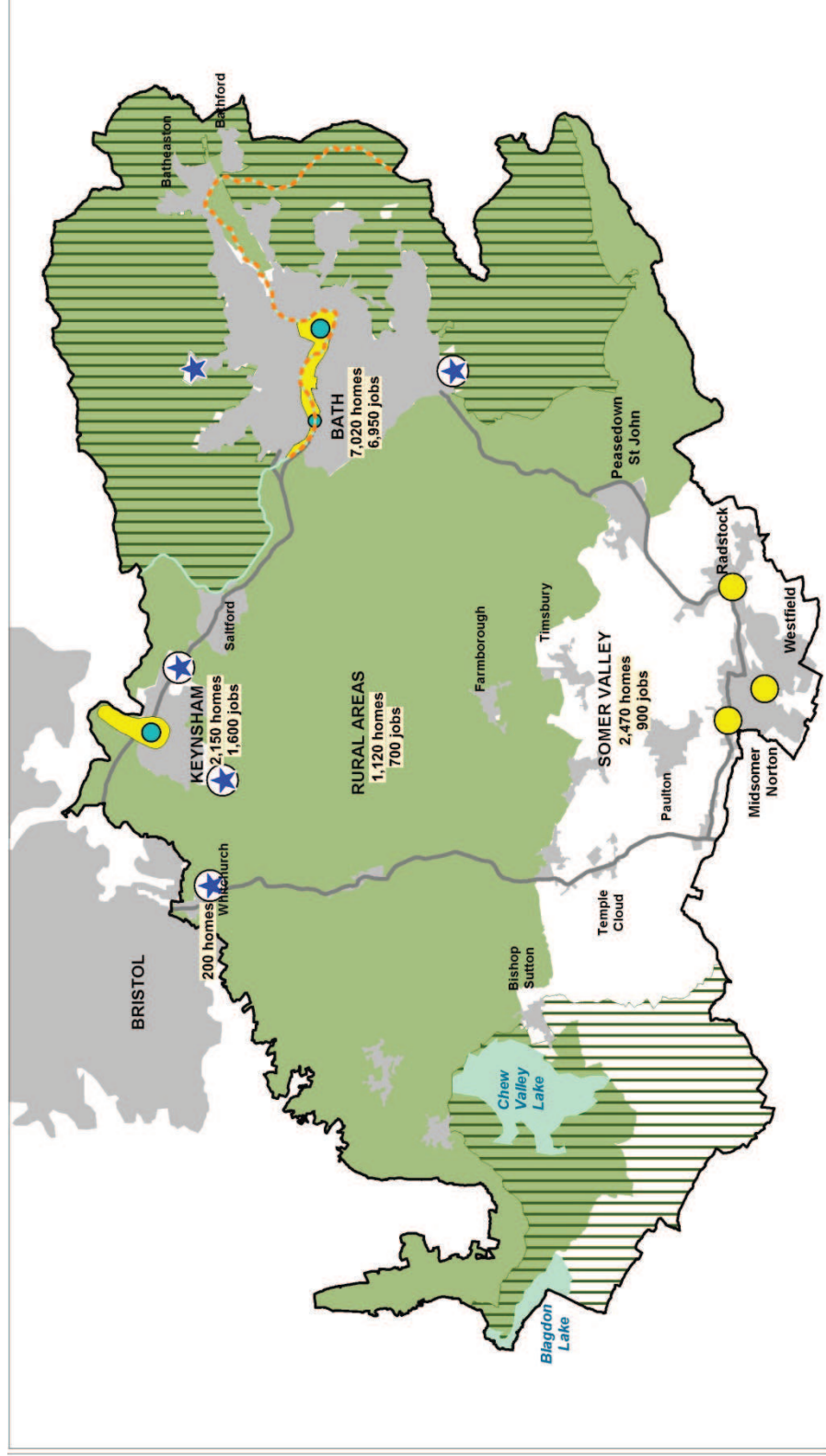
CORE STRATEGY & PLACEMAKING PLAN

Richard Daone
Planning Policy Team Leader

Core Strategy

- Adopted 10th July 2014
- Legal challenge period expired – no legal challenge
- Part of statutory Development Plan, comprising:
 - Core Strategy
 - Saved Policies from B&NES Local Plan
 - Joint Waste Core Strategy

The spatial strategy

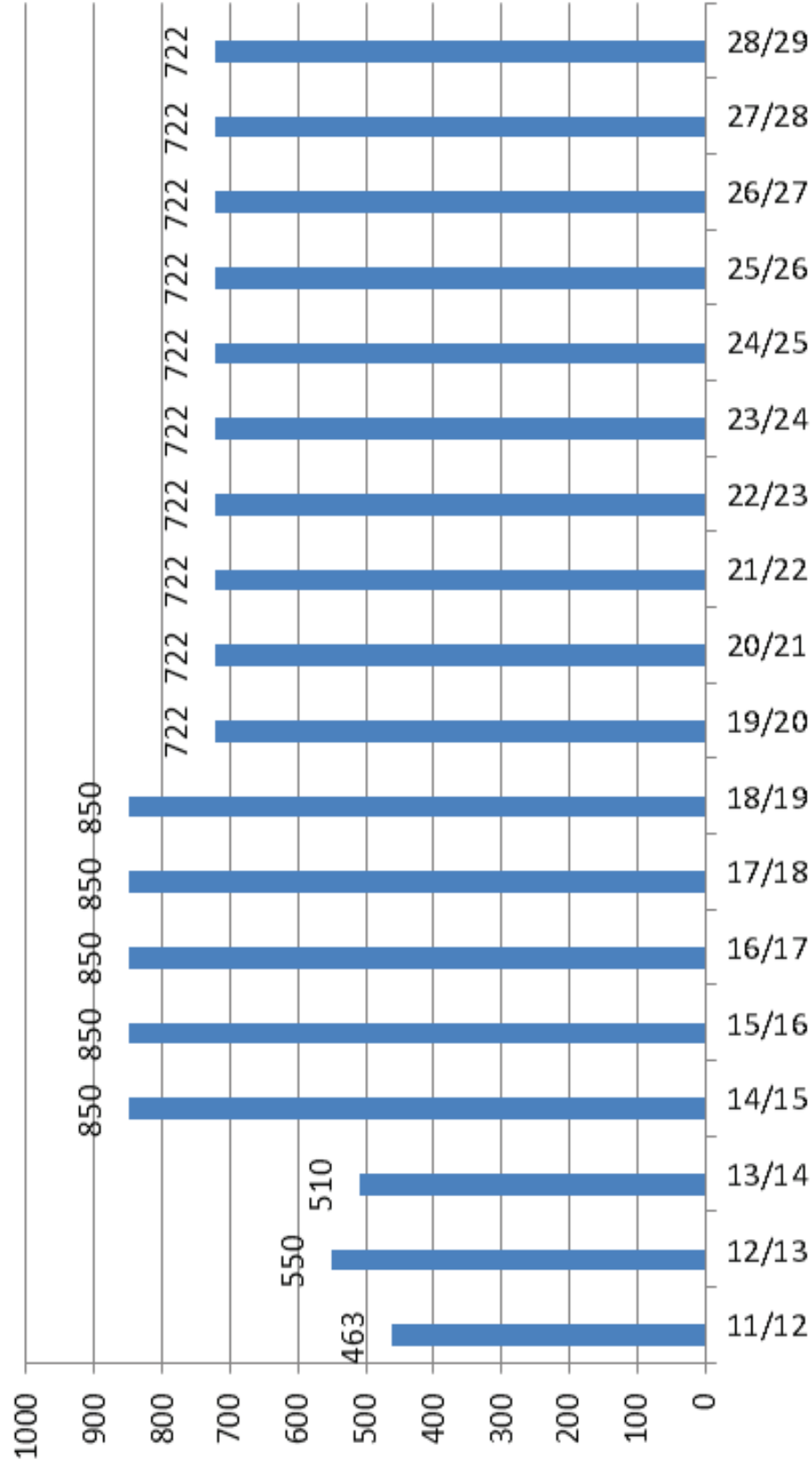


Making Bath & North East Somerset an even better place to live, work & visit

Place Based Policies

- Policy RA1: villages meeting facilities/public transport access criteria (around 50 homes)
- Policy RA2: other villages (with HDB) outside Green Belt (around 10-15 homes)
- Villages washed over by Green Belt – Policy HG.6 and NPPF

Core Strategy Housing Trajectory as at adoption



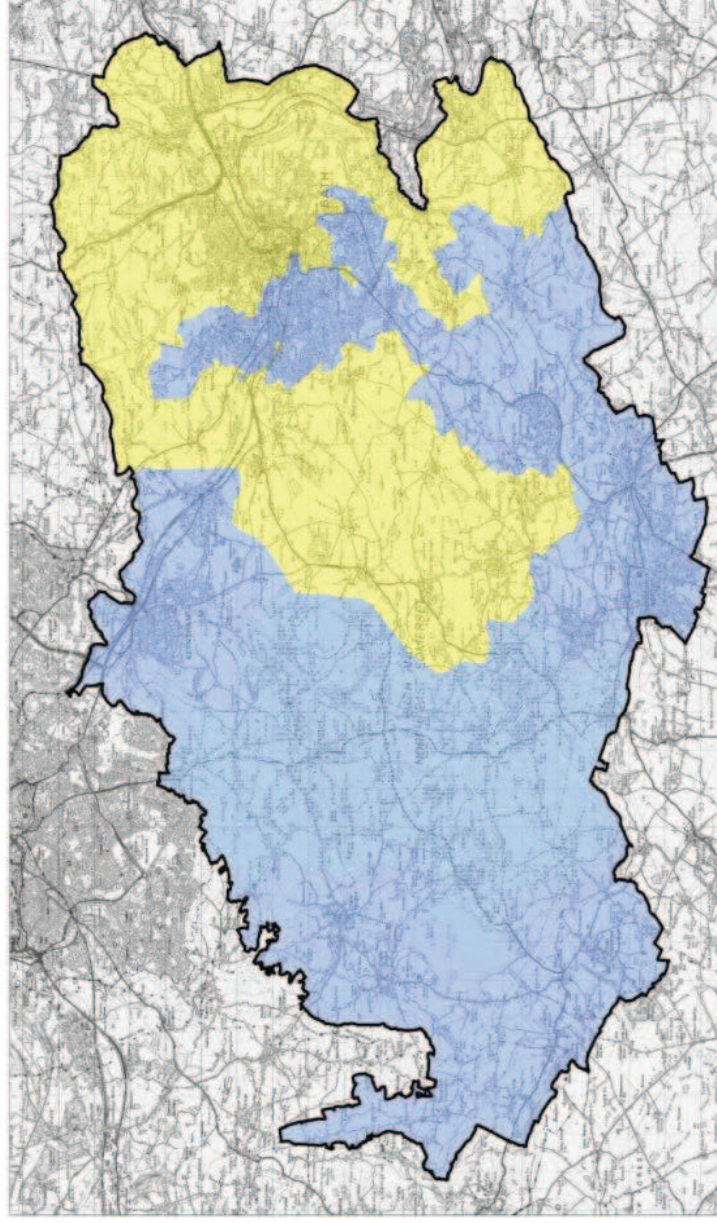
Making Bath & North East Somerset an even better place to live, work & visit

Housing applications

- More control over housing applications as we now have 5 Year Land Supply
- 13,000 housing requirement not a cap - site not needed to meet requirement cannot be sole reason for refusal (e.g. brownfield windfalls)
- RA1 villages: where 50 homes are committed – greenfield development outside HDB not needed
- Other RA1s e.g. Temple Cloud, High Littleton – large sites are needed – allocate via Placemaking Plan but no prematurity argument (NPPG)
- RA2 villages: sites outside HDB may need to be identified in Placemaking Plan – no prematurity argument
- Villages washed over by Green Belt – infill only

Affordable Housing (Policy CP9)

- Policy reflects geographic variations in viability
- Now seek AH on sites of 5-9 dwellings



Making Bath & North East Somerset an **even** better place to live, work & visit

Replaced LP Policies (Appendix 1)

B&NES Local Plan Policy	Topic	Replaced by Core Strategy Policy
ET.1	Employment Plan Overview	DW1 District Wide Spatial Strategy B1 Bath Spatial Strategy KE1 Keynsham Spatial Strategy SV1 Somer Valley Spatial Strategy
ET.4	Employment development at rural settlements	RA1 Development in the Villages Meeting the Listed Criteria RA2 Development in Villages Outside the Green Belt not Meeting Policy RA1 Criteria
ES.1	Renewable energy proposals	CP3 Renewable Energy
HG.1	Overall housing requirement and mix	DW1 District Wide Spatial Strategy CP10 Housing Mix
HG.4	Residential development in Bath, Keynsham, Norton Radstock and R.1 and R.2 settlements	B1 Bath Spatial Strategy KE1 Keynsham Spatial Strategy SV1 Somer Valley Spatial Strategy RA1 Development in the Villages Meeting the Listed Criteria RA2 Development in Villages Outside the Green Belt not Meeting Policy RA1 Criteria
HG.8	Affordable housing on allocated and large windfall sites	CP9 Affordable Housing
HG.9	Affordable housing on rural exception sites	RA4 Rural Exceptions Sites
HG.16	Gypsy and traveller sites	CP11 Gypsies, Travellers & Travelling Showpeople
HG.17	Purpose built student accommodation	B5 Strategic Policy for Bath's Universities
GB.1	Control of development in the Green Belt	CP8 Green Belt
BH.1	Impact of development on World Heritage Site of Bath or its setting	B4 The World Heritage Site and its Setting
S.1	Hierarchy of shopping centres	CP12 Centres and Retailing
S.2	Retail development within shopping centres	CP12 Centres and Retailing

Placemaking Plan: Scope & Purpose

- Complement Core Strategy - Part 2 of Local Plan
- Allocating sites for development – land use mix/development & design principles
- Update infrastructure requirements - align provision
- Detailed Development Management policies (review remaining B&NES LP Policies)

Programme

- Options document/consultation – Nov 2014
- Draft Plan – September 2015
- Submitted for Examination – January 2016
- Examination – March 2016
- Inspector’s Report – July 2016
- Adopted – September 2016

Options Document

- Main site allocation options – test reasonable alternatives
- Development Management policies – proposed approach/options
- Feedback/consult on results of work with town & parish councils
- Public consultation
- Stakeholder involvement in preparing Draft Plan

Key Issues

- Site Allocations:
 - DM Policy Areas e.g:
 - Housing
 - Retail
 - Employment
 - Transport
 - Green Infrastructure
 - Lighting
 - Energy Minerals
 - SUDS
 - Local Food
 - Renewable Energy
- Bath Enterprise Area
- Bath other
- Keynsham
- Somer Valley
- Rural

Sites/Policies: Rural Areas

- Successful working with parish councils
- Site allocation and local green space designation options
- RA1 and RA2 villages
- Development Management Policy Options
- Further detail in November

Questions?

Agenda item 8. What are our priorities

Making Bath & North East Somerset an even better place to live, work & visit

Priorities for the local Forum

Aim: To create an Area Profile and Action plan for the Chew Valley Forum.

- What is the data telling us?
- What is the community saying?
- Where are the gaps?
- What should the priorities be?

Making Bath & North East Somerset an **even** better place to live, work & visit

What is the data telling us?

Key facts and figures

- There are 9,974 residents
- 22% are under 18, 2% full time students, 22% over 65
- 2.1% increase in population since 2001
- 29% economically inactive, of which 18% are retired, higher than the national average
- 5.8% of lives “limited a lot” by a disability
- 120 employment & support allowance claimants



Making Bath & North East Somerset an even better place to live, work & visit

What is the data telling us?

Key facts and figures

- 38% of people have a degree or above – higher than national average (27%)
- 18% of people have no qualifications – lower than national average (23%)
- 1 in 4 children are aged between 5 and 6 years
- 3 in 10 children aged 10 and 11 are overweight or obese
- There is very little deprivation in the Chew Valley – all wards are within the least deprived 30% nationally
- Chew Valley South Ward falls within the least deprived 10% nationally
- Child poverty (5%) is low compared to the UK (27%)

What the community are saying?

Key issues highlighted

- Traffic, access and public transport
- Children & Young people
- Developments and Infrastructure
- Economic Development & Enterprise
- Environmental Sustainability and Climate Change
- Health & Wellbeing
- Stronger Communities
- Safer Communities

Making Bath & North East Somerset an **even** better place to live, work & visit

Where are the gaps?

What is missing from the data and key issues?

- Access to rural services – deprivation figures don't reflect the local situation
- Ageing population – latest census shows increase by 42% of people aged 75+ (Chew Valley South Ward)
- Need a full analysis of health related issues
- Need comparisons between Wards and other Forum areas to highlight particular issues
- Transport and movement – not sure what information is currently held?
- Employment and business – are there issues around skills, business support?
- Other local information and knowledge should be included – Village Agents, Community transport, what else?

Are we meeting the needs?

Should the Forum's priorities be....

- Access to services
 - thinking rural and delivering within a rural setting?
 - focus should be on older and vulnerable people's services?
 - Health and wellbeing services for all ages?
- Traffic, access and public transport
 - Access for health related issues?
 - Access to school and work?
 - Access for leisure?

Making Bath & North East Somerset an **even** better place to live, work & visit

Priorities for the local Forum

Group discussion

- What is missing from the data?
- Are there further issues from the community that need highlighting?
- Are the priorities right?
- Do we need to do more work before we agree the priorities?

Making Bath & North East Somerset an **even** better place to live, work & visit

Next Steps

Aim – draft Area Profile and action planning – Feb 2015

Options:

- Set up a working party to bring this work together
- Give Chair and Vice Chair responsibility to take this forward and liaise with Stronger team
- Stronger team undertake work and report back once profile is complete.

Agenda item 8. Standing items

Agenda item 8. Standing items – Community safety report

Agenda item 8. Standing items – Health issues – Your Health, Your Say

Agenda item 10. Any other business

Agenda item 11. Dates of future meetings

**Thursday 20th November 2014
Thursday 12th February**

**Venue: The Wellsway, West Harptree
Time: 6.30pm**

The End

This page is intentionally left blank

Chew Valley Forum – 20th November 2014

Area profiles, Forum priorities and action planning

The draft Area profile provides an overview of the population and its characteristics. It has been designed to gain a better understanding of the issues and opportunities affecting the local community. More work is required on developing the profile further, particularly around the areas where the priorities have been identified.

The data shown in the report has been sourced from the census, mostly at Ward Level where available, however some key data relates to B&NES as a whole as it is unavailable at Ward level. Further data needs to be gathered from other sources and this work will be developed over the next couple of months.

The Forum's priorities have been drawn from previous work undertaken by the former Chew Valley Area Partnership and subsequent discussions at the Forum meetings. These have been identified under eight common themes, with two main priorities, health and wellbeing and transportation.

The Council continues to build on its existing research and intelligence library and these profiles will contribute to this wider data sharing. <http://www.bathnes.gov.uk/services/your-council-and-democracy/local-research-and-statistics/research-library>. Any consultations undertaken, such as Parish Plans or community surveys on local issues can contribute to this data library and the Area Profile. Creating one place for data and information about a local area will help ensure future priorities reflect local needs.

At the meeting, I will be seeking comments on the following:

- Draft Area Profile - any comments, amendments, inaccuracies in the profile?
- Forum Priorities - Do the priorities reflect the Forum's views, if not what is missing / what needs to be changed?
- Action plan - needs to be realistic and achievable, how should the Forum develop the action plan?

What we need from you?

- Identify consultations undertaken, such as Parish Plans or community surveys on local issues that would contribute to the data library, profile and action planning.

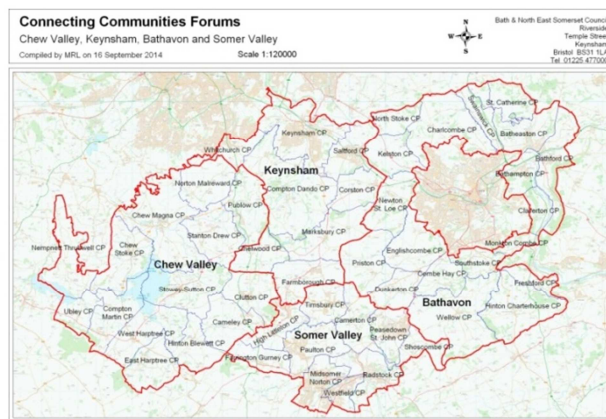
Sara Dixon
Acting Stronger Communities Manager
Thursday, 13 November 2014

Chew Valley Area Profile

Context – Chew Valley Area Forum

The 'Connecting Communities' programme is an initiative designed to help public service providers listen to, and meet the needs of, all the diverse people and communities who live in the area. The approach has been built around five key principles: 'listen, prioritise, join-up, work with you and share ideas'.

This initiative has come at the right time. Getting the input of local people in order to design the right services is seen as increasingly important. And as there is now much less public funding available, local people and neighbourhoods are being asked to help run services too. Each area will be supported by a local 'Forum' that will work together to improve local engagement between the public services and the local communities and encouraging local people to talk to each other, share their skills and ideas.



Chew Valley Area Forum is one of four area Forums that brings together neighbourhoods, villages and towns to reflect local issues and develop a more joined-up approach to addressing these concerns. It covers the parishes of, Cameley, Chew Magna, Chew Stoke, Clutton, Compton Martin, East Harptree, Hinton Blewett, Nempnett Thrubwell, Norton Malward, Publow with Pensford, Stanton Drew, Stowey Sutton, Ubley, West Harptree.

This profile has been designed to gain a better understanding of the issues and opportunities affecting the local community and set out the shared priorities agreed by partners across the area.

The Chew Valley - At a glance

The Chew Valley lies to the west of Bath and North East Somerset, and has strong links to Bristol. It is a large rural area and identified as an Area of Outstanding Natural Beauty. One of its key features is the Chew Valley Lake, an important site for wildlife which has been dedicated as a Site of Special Scientific Interest and a Special Protection Area.

The Chew Valley Area covers 4 electoral wards and 14 parishes. Its population is approximately 9,974. Key villages include Chew Magna, Chew Stoke and Pensford, these are washed over by the Green Belt and are junctions to several main transport routes providing access to Bristol in particular.

Poor public transport provision means that the population is very reliant on private transport. The need for Community Transport has continued to increase particularly for health related appointments and social activities.

Unemployment in the area is lower than the national average. The Chew Valley has a higher percentage of self-employed people, along with a high proportion of people in senior managerial or professional roles. Nearly a quarter of the

Key Facts

- There are 9,974 residents, 22% are under 18, 2% full time students, 22% over 65 and 9% are over 75. 2.1% increase in population since 2001.
- Chew Valley South Ward falls within the least deprived 10% nationally.
- 29% economically inactive, of which 18% are retired, higher than the national average.
- 38% of people have a degree or above – higher than national average (27%).
- 18% of people have no qualifications – lower than national average (23%).

workforce either work mainly from home or at home, and for those people that travel to work, the majority travel distances of between 5km and 20km.

There is one secondary school, Chew Valley, which has 1200 pupils including 200 in the Sixth Form. Many of the student travel from bordering areas such as Bristol. The school site also accommodates the leisure centre and a children centre. There are eight primary schools in the area, seven are run by the Local Authority and one of which, Chew Stoke, is an Academy.

Chew Valley is particularly prone to flooding and 48 properties across Chew Magna and Chew Stoke flooded in September and November 2012 – leading to 1 fatality.

Housing growth in the Chew Valley over the next 20 years will be limited and any new development will be focussed on villages outside the Green Belt that have a wide range of local facilities and public transport. The Core Strategy allows provision for the larger villages outside the Green Belt to identify development sites to accommodate around 50 dwelling, with small villages outside the Green Belt with a more limited range of services/facilities identifying sites to accommodate around 10 to 15 dwellings within the plan period. For those villages within and ‘washed over’ by the Green Belt new housing provision is limited to small scale infill development or limited affordable housing to meet local community needs.’

The Village Agents scheme provides support for local residents to help and support mainly older people and their families throughout a significant life change. This is often triggered by a change in circumstance such as a family member returning from hospital or a loss of a relative. The Village Agents work through the issues in order to help them maintain a healthy and independent lifestyle.

A number of the larger villages have retained their local pub and convenience stores with some provision for post office services, and a supply of library books being part of the ‘Hub in the Pub’ in Chew Stoke. All villages have a church room, village or community facility, which vary in size and are used by a range of clubs and groups on a regular basis. The mobile library service also operates once a week in the area. Chew Magna acts as a local service hub to the surrounding villages, although more recently the GP surgery in Chew Magna relocated to a nearby village Chew Stoke. Other GP surgeries are located in West Harptree and Temple Cloud.

There are high levels of volunteering, much of which is informal volunteering helping neighbours and caring for relatives. There are many residents who are involved in community activities, such as lunch clubs, local flood wardens, the hub in a pub, and community car scheme. However with an aging population the available ‘volunteer pool’ is likely to reduce and the need for health related services and adequate transport provision will increase further.

Future Challenges

Many rural communities have experienced significant social change over the last couple of decades and the Chew Valley has experienced the greatest proportion of population ageing across

Key Facts

- 1 in 4 children are aged between 5 and 6 years (B&NES).
- 3 in 10 children aged 10 and 11 are overweight or obese (B&NES).
- 5.8% of lives “limited a lot” by a disability (B&NES).
- 120 employment & support allowance claimants (B&NES).
- Child poverty (5%) is low compared to the UK (27%).
- Chew Valley South Ward is one of the highest rate of under 18 emergency admissions for injuries.
- The Chew Valley car scheme is run by 47 volunteers for medical appointments only. In the last year 170 passenger journeys were made averaging between 2 miles to longer distances eg RUH in Bath.
- There have been approximately 8 floods in the area since 1960. In July 1968, double the normal rainfall fell in just 18 hours, flooding 88 properties in Chew Magna – some up to 2m deep.

the authority area - latest census shows an increase by 42% of people aged 75+ (Chew Valley South Ward).

Whilst many of the villages have some services for the local community to access these are widely spread. Coupled with the lack of public transport in the rural area, accessing doctor's surgeries, schools, shops and post offices requires most people to travel by private transport, either by car or taxi. The increased costs of accessing services together with the increased costs of housing has led to rural living becoming less and less affordable, and for some completely unaffordable. This is particularly a problem for older people, families with young children and young people.

Chew Valley Priorities

The Forum has identified a number of priorities that are of particular concern to the area which are set out below under eight common themes. The Forum recognises that work is already underway in some areas to address these issues, such as Neighbourhood plan, Placemaking, Flood Forum etc. However there are two areas where the biggest impact is being felt by the community, these are:-

Increase **Health & Wellbeing** by:

- improving access to services by offering more accessible ways to deliver services recognising the challenges of rural life and reducing inequality, isolation and loneliness.

Improve **Transport provision** to:

- increase the health and wellbeing of those more isolated by considering alternative methods to public transport.
- help reduce the impact of congestion by improving connections to the main public transport routes for commuters.

The Forum will regularly review its eight themes in order to respond to new challenges and changing circumstances. Their other priorities include:-

Children & Young people -

- improve the provision of services and facilities for young people.

Developments and Infrastructure-

- ensure the impact of development maintains the identity of villages and provides sufficient improvements to infrastructure such as schools, roads, traffic and health.
- Improve the availability of affordable housing for local people.

Economic Development & Enterprise -

- support rural businesses to thrive.
- improve the access to broadband for rural businesses.

Environmental, Sustainability and Climate Change -

- maintain awareness of the threat of Fracking in the local community.
- reduce the impact of flooding by working in partnership with agencies and the community to identify prevention measures and maintenance.

Stronger Communities -

- ensure community facilities are accessible and affordable to the whole community.

Safer Communities-

- provide a safe community by reducing anti-social behaviour.

Priority 1 - Health & Wellbeing

Further information needs to be obtained from:-

- Village Agents
- Social housing – what level, existing social housing and type of stock
- Hospital provision – where?
- Projections figures for schools and health?
- Neighbourhood plan data
- GP surgery – share data with GP surgeries

Priority 2 – Transport provision

Further information needs to be obtained from:-

- Dial a ride – who access the services
- Transport – age related issues
- Regional data regarding Transport – Regional spatial strategy
- Parish survey's - priorities for transport and other issues

This page is intentionally left blank

CONNECTING COMMUNITIES FORUM – 20th NOVEMBER 2014

Agenda item 7 – RURAL BROADBAND UPDATE

1. BACKGROUND

- 1.1 The Council is part of the Connecting Devon & Somerset (CDS) Partnership which is working to improve rural broadband services. The £94m CDS project aims to provide superfast broadband to 90% of properties across Devon, Somerset, North Somerset & B&NES by 2016.
- 1.2 The programme is restricted by State Aid rules to areas which are served by non-commercial single provider telephone exchanges.
- 1.3 This paper provides an update on the current position regarding the work of the CDS Partnership and the roll-out of superfast broadband to the rural areas of B&NES. It also covers the support which is now available specifically to businesses and organisations within B&NES.

2. CDS - CURRENT POSITION

Current Programme

- 2.1 Survey work on existing rural service networks is now underway in B&NES and the roll-out of superfast broadband is expected to start in 2015. The survey work will determine the future programme for service provision and this is therefore subject to change on an ongoing basis.
- 2.2 This makes it difficult to be precise on the timetable for the provision of superfast broadband to specific communities / locations within the area. However to assist with information provision the CDS website <http://www.connectingdevonandsomerset.co.uk/> now provides a postcode search facility. By using this facility specific properties can determine whether they are included in the rural broadband roll-out programme and the current schedule for survey work in the area.
- 2.3 The website also includes a map covering the whole of the CDS area showing locations that are live, soon to be covered and under evaluation. The map also shows the areas which are covered “commercially” and therefore not included and the “grey” areas which are currently outside the programme.

Additional Funding

- 2.4 CDS has also been successful in securing additional government funding for a further investment of £38.3m in extending the coverage of rural broadband to 95% of properties. Building on commercial provision from the private sector, this new investment will enable CDS to increase coverage to 95% of homes and businesses by 2017 and and it puts the programme well on the way to achieving its target of 100% coverage by 2020. This CDS BDUK programme delivers fibre to the cabinet, providing

broadband speeds of up to 24mbps, but the actual speed will depend on distance of the premise from the cabinet.

- 2.5 It is proposed to run an open procurement exercise to find the best partners to deliver broadband solutions funded by this additional investment. CDS aim to select one or more partners by next February. By that time, CDS will also be able to identify the communities that will benefit from the additional funding.

3. BUSINESS BROADBAND

- 3.1 Bath and North East Somerset companies and organisations within 5 miles of the Bristol boundary are now able to benefit from the national Super-Connected Cities Programme by getting a connection voucher of up to £3,000 for faster, better broadband. The attached plan shows the area and main communities covered by the five mile extension.
- 3.2 You can input the postcode for a specific property into the online checker at <https://www.connectionvouchers.co.uk/city/bristol/> to confirm that the premises are eligible.
- 3.3 Companies and organisations within the 5 miles radius should have received a letter encouraging them to take up the opportunity. To receive a voucher, eligible businesses will need a connection quote from a broadband supplier. Wireless solutions are also valid and groups of businesses or organisations, in a location such as a business park, can combine their vouchers to achieve a solution. Funds need to be allocated by March 2015.
- 3.4 Questions about the Connection Vouchers Scheme should be addressed to Bristol City Council who are administering the scheme. The Council can be contacted by email at <mailto:connection.vouchers@bristol.gov.uk> or by phoning 0117 357 4445.
- 3.5 Partners in the West of England are continuing to lobby Government to have the scheme extended across the whole of the sub-region.

4. BROADBAND POSITION

- 4.1 The Council's Community Regeneration have appointed Matthys van Tonder to the Broadband post. This is a two year fixed term post with the remit to drive forward the delivery of Broad band and WiFi across B&NES. This will include exploring options for sharing access to the School Fibre Network across B&NES.
- 4.2 Matthys is a highly knowledgeable IT expert who led the roll-out of high speed broadband across urban and rural South Africa using combinations of fibre and wifi/microwave technologies. He commences work for B&NES on Monday 24th November.
- 4.3 The intention is that Matthys will be available to meet with communities across B&NES to identify the most appropriate solution to rolling out broadband to those areas.